

THE REDEEMER RECORD

Vol. 111, No. 2

February, 2016



By photographer, Stephen Geffre from the February 2016

"The Lutheran Magazine" article "Embracing Diversity"

written by Karris Golden

LUTHERAN CHURCH OF THE REDEEMER

Rev. James Erlandson, Pastor

285 North Dale Street, St. Paul, MN 55103

651-227-8295

www.redeemerstpaul.org

Tahnea Brown, Office Manager

Dr. Jon Strommen Campbell, Music Director

Katie Thompson, Organist

A Letter From Pastor Erlandson

"He's got the whole world in His hands" (Spiritual)

Dear friends,

Some of you remember the *Ed Sullivan Show* from television in the 1950s and 60s. It was a variety show that featured rock-n-roll acts from Elvis Presley, the Beatles, to the Jackson Five – and comedians, jazz singers, acrobats and jugglers. I was always fascinated to watch the performer who would keep about a dozen plates spinning on sticks all at once. His assistant would toss another plate to him, and he'd keep it spinning on another stick. Very seldom did any ever drop and shatter on the floor – but when they did, it only added to the drama, and the sense of difficulty for the act. Similar acts are seen today on shows like *America's Got Talent*.

Sometimes life can seem like we are spinning plates simultaneously on sticks. At least for me, that is sometimes an image I have for my ministry. (It's like having lots of "irons in the fire," or several cakes in the oven all at once.) Presiding at the altar during worship can be like spinning several plates all at once – there are worshipers, scripture readers, choir, worship assistants, acolytes and ushers all doing their thing, sometimes independently – but we all have to flow as one during the course of the liturgy. The presider's role is to keep them all spinning at once, in harmony. That's also how the whole life of the Church can be! As a pastor sometimes I feel like I'm keeping all of these individual plates spinning, trying not to break any of them! Peoples' personal lives, different congregational ministries, support groups, and community incidents or events, all are going on simultaneously or independent of each other. Who can keep track of them all?! So it is my challenge to hold these things together in my mind, within one theological framework: that this is what life is in the Church, that *God holds all of us in God's hands (not my hands, or yours)*. God has done this in the past, and still does in the present. Jesus Christ is present with us today, and will be forever.

So we enter the Lenten season this month of February, and we hold several concurrent ministries and conversations simultaneously – sometimes like spinning plates. We begin the Lenten season of worship – with five Sunday morning worship themes, and five midweek worship services – in which we explore God's covenant with us, and our baptismal promises to God. We begin with the words *remember that you are dust, and to dust you shall return* – Ash Wednesday's reminder of our mortality and our sin. We complete our Lenten journey in Holy Week, by retelling the drama of Palm Sunday and the Passion Narrative of Jesus' death on the cross – and his rising again to life on Easter. Concurrent with our Lenten journey is our ministry of hospitality in March, when we welcome families into the church undercroft for Project Home. All the while we continue all of our church ministries of music, faith formation, visioning for the future, and do the work of justice through ISAIAH – and keep in relationship with one another.

Perhaps it seems like a lot to "juggle" – a lot of plates to keep spinning in the Church! But never forget that it is God who holds all of this in God's hands – with love. Our faith is in God to keep it all in balance – the responsibility is not ours, but God's gift. We are just called to be faithful, and ask God for wisdom and strength!

Soli Deo Gloria.
Pastor Jim Erlandson

February Calendar

Recurring Weekly Events

Sun.	10:00 am ~ Worship
	11:15 am ~ Coffee Fellowship
	12:00 pm ~ Universal Life Church of God
	12:00 pm ~ Praise Covenant Church
Mon.	4:00 pm ~ Shakespearean Youth Theatre
Tues.	4:00 pm ~ Shakespearean Youth Theatre
Wed.	7:00 pm ~ Senior Choir
	8:00 pm ~ Courage to Change N.A.
Thur.	6:30 am ~ Prayer & Meditation A.A.
	4:00 pm ~ Shakespearean Youth Theatre
Fri.	4:00 pm ~ Shakespearean Youth Theatre
	8:00 pm ~ Words into Action N.A.
Sat.	8:00 am ~ Siloé Church
	1:00 pm ~ Shakespearean Youth Theatre

Other Events

2nd	7:00 pm	Vestry Meeting
4th	6:30 pm	ISAIAH St. Paul Caucus
8th	7:00 pm	MN Renaissance Choir Rehearsal
9th	7:00 pm	"Mardi Gras" 3-D Visioning Meeting
10th	10:00 am	Ash Wednesday Service
	6:00 pm	Sex Offender Community Meeting
	7:00 pm	Ash Wednesday Service
13th	5:00 pm	N.A. Valentines Day Dance
15th	7:00 pm	The Family Tree: Book Reading & Discussion
17th	5:30 pm	Soup Supper
	7:00 pm	Lenten Worship
18th	4:00 pm	Black History Month Event
22nd	7:00 pm	MN Renaissance Choir Rehearsal
24th	5:30 pm	Soup Supper
	7:00 pm	Lenten Worship
25th	7:00 pm	ISAIAH Core Team Meeting

SPECIAL CONGREGATIONAL MEETING

The Vestry is calling a Special Congregational Meeting on **Sunday, March 6, at 11:30 am.** The purpose of the meeting is **to consider amendments to the by-laws and to elect officers.**

February Altar Servers

If you are unable to serve, please contact an elder or the church office no later than the Tuesday of the week you are signed up to serve so that a replacement can be found.

	<u>Deacon</u>	<u>Subdeacon</u>	<u>Reader</u>	<u>Thurifer</u>	<u>Crucifer</u>
Feb 7	Tammy Cownie	Trudy Cretsinger	Mary Lou Knipe	David Tannen	Ray Hayes
	Acolyte	Torchbearers		Bannerbearers	
	Jack Sprung	DeAnne Hilgers	Chris Sprung	Hilary Ziols	Obang Agwa
Feb 10	Deacon	Subdeacon	Reader	Acolyte	
	Trudy Cretsinger	Joann Conroy			
Feb 14	Deacon	Subdeacon	Reader	Acolyte	
	Joel Michael	Lelilani Drake	Diana Rankin	Theodore Strommen	
Feb 21	Deacon	Subdeacon	Reader	Acolyte	
	DeAnne Hilgers	Joann Conroy	Ruth Belmonte	Neal Caerwyn	
Feb 28	Deacon	Subdeacon	Reader	Acolyte	
	Michelle Geshwill	Bob Paddock	Leilani Drake	Jared Geschwill	

FEBRUARY SCRIPTURES

We invite members and friends of Redeemer to read the appointed scriptures for each Sunday. This is a meaningful way to prepare for worship. It also binds us to our homebound sisters and brothers who we also encourage to read the same scriptures weekly.

	First Reading	Psalms	Second Reading	Gospel
Feb 7 <i>Transfiguration of Our Lord</i>	Exod 34:29-35	Ps 99	2 Cor 3:12—4:2	Luke 9:28-36 [37-43a]
Feb 10 <i>Ash Wednesday</i>	<i>Joel 2:1-2, 12-17 or Isa 58:1-12</i>	<i>Ps 51:1-17</i>	<i>2 Cor 5:20b—6:10</i>	<i>Matt 6:1-6, 16-21</i>
Feb 14 <i>1 Lent</i>	Deut 26:1-11	Ps 91:1-2, 9-16	Rom 10:8b-13	Luke 4:1-13
Feb 21 <i>2 Lent</i>	Gen 15:1-12, 17-18	Ps 27	Phil 3:17—4:1	Luke 13:31-35
Feb 28 <i>3 Lent</i>	Isa 55:1-9	Ps 63:1-8	1 Cor 10:1-13	Luke 13:1-9



ASH WEDNESDAY, 10 am
Confession & Forgiveness
Imposition of Ashes
Scripture Readings & Reflection
Prayer

ASH WEDNESDAY, 7 pm
Confession & Forgiveness
Imposition of Ashes
Scripture Readings & Reflection
Prayer
Holy Communion

LENTEN MIDWEEK WORSHIP

We will gather at 5:30 pm each Wednesday during Lent for Soup Supper in the undercroft, and at 7:00 pm for Lenten Evening Prayer in the church sanctuary. There is a sign-up sheet in the undercroft for those who would like to make soup and serve it on Wednesday evenings.

The theme for Lent this year is *Continuing in the Covenant of Baptism*. This year we have three confirmation students who will affirm their baptism on Sunday, May 15, the Feast of Pentecost. Each Wednesday evening we will explore one of the promises we make in the affirmation of our baptisms, in the Service of Evening Prayer at 7:00 pm, and in guided conversation ("Table Talk" at 7:30 pm in the undercroft.) The dates and themes are as follows:

Wednesday, February 17, 7:00 pm

"To Live Among God's Faithful People"
Acts 2:37-47

Wednesday, February 24, 7:00 pm

"To Hear the Word of God and Share in the Lord's Supper"
Luke 24:28-32

Wednesday, March 2, 7:00 pm

"To Proclaim the Good News of God in Christ Through Word and Deed"
Luke 24:44-49

Wednesday, March 9, 7:00 pm

"To Serve All People, Following the Example of Jesus"
John 13:31-35

Wednesday, March 16, 7:00 pm

"To Strive for Justice and Peace in All the Earth"
Micah 6:6-8

The whole community is welcome to join us for soup supper, worship and discussion, so please invite your friends.

ADULT FORUMS

Feb. 7, 2016 9:00 A.M. "Islam from the Heart" Presented by Concordia student Abdullah Alrohaeem. This is your chance to become more familiar with the Muslim religion and how it affects a student's life. Redeemerite Reva Rasmussen has helped several Muslim students by providing housing and friendship.

Feb. 14, 2016 9:00 A.M. "My Life in Afghanistan" Presented by Mahdi Rahmani, a student at Saint Paul Prep High School. Mahdi is another student helped by Reva. He will give us a view of living in this war torn country and how he came to Minnesota.

Feb. 21, 2016 11:30 A. M. "Refugee Services in Minnesota" Presented by Sarah Kretschmann, congregational relations associate at Lutheran Social Services. Lutheran Social Services has a long history of assisting with refugee needs and working with congregations in their support of refugees.

Feb. 28, 2016, 9:00 A. M. "What Do We See in the Bible About God's Mission to the Poor?" Presented by Joseph Rittman this is the beginning of his four week series: "God's Mission Statement: Good News To The Poor"(Luke 4: 16-21).

~~~~~  
There will be an Adult Forum Planning meeting Thurs. Febr. 11, 2016 at 10:15 A. M. in the library. You are invited to attend. For more information contact Joan foreman at 651-699-0266.

---

## Food and Drink in the Biblical World (webcast available)

**Spring:** April 4 - May 2, 2016

**Course Time:** MONDAY EVENING 7:00 - 9:00 p.m.

Have you ever considered how central food and drink is to the stories, laws, poetry and images of the Scriptures? In this course we explore how food and drink functions in encounters, in moments of anxiety, in divine promise and so much more throughout the Bible. We will look at food and drink in the Torah, the historical books, the wisdom tradition, the prophets and Psalms and the New Testament. **Webcast Available**

### Seminar Leaders:

- Diane Jacobson, Professor Emeritus of Old Testament
- Anna Grunner, Ph.D. student, Jewish Theological Seminary

To register, visit:

[http://www.luthersem.edu/lifelong\\_learning/layschool/courses.aspx](http://www.luthersem.edu/lifelong_learning/layschool/courses.aspx)



### MARDI GRAS IN 3-D

Join in the fun of the **Mardi Gras Celebration** on **Tuesday, February 9<sup>th</sup>** at **7:00pm**. We'll gather for an evening of **Desserts, Direction, and Dreaming**. *Mardi Gras*, as most realize means "fat Tuesday." The day prior to Ash Wednesday came to be named this way because people were to use up all the fat, eggs, and other rich food stuffs that were forbidden during the fasting of Lent.

In honor of that tradition, Redeemerites are invited to bring deliciously decadent **desserts** to share at this celebration. As we enjoy the desserts, we'll discern a **direction** for our life together as God's people through dwelling with God's word and discussions with each other. Then we'll dare to **dream** and share ideas about what God might be calling us to do in this time and place, a destination for our Lenten journey.

Members of all ages are welcome to join the fun. Wear your Mardi Gras beads and masks, if you have them. Put on your party hats or thinking caps, whichever you prefer. Come for fun and fellowship as we share our hopes and dreams for our future with God's direction ... and some very wonderful desserts.



## ISAIAH CORE TEAM NEWS

In partnership with the other congregations of ISAIAH's Saint Paul Caucus, we are continuing the effort to bring about Earned Sick & Safe Time (ESST) for all employees within the boundaries of our city. A number of other organizations in the community are joining in this effort because it simply makes sense. The workers most affected by the lack of such benefits tend to be those in low-wage positions and such positions often have a high level of direct contact with the public. *(Think fast food and other restaurant employees, cashiers and store clerks, and similar positions throughout our community.)* Workers who do not have access to paid time off must go to work even when they are ill or else have a smaller check come payday. When they come to work sick, they are well positioned to share their illnesses with the people who have contact with them. It just makes sense that people should be able to stay home and recover when they are sick (or to care for their dependents when they are sick). We also want victims of domestic violence to have access to paid time off from work in order to access the services they need to secure safety and shelter for themselves and their children.

A number of developments are taking place even as this edition of the Record is being printed. The subject will be discussed at the City Council meeting on February 3<sup>rd</sup> when a study of these policies is to be recommended. Forums on this topic are in the early planning stages for a number of wards in the city. Watch for opportunities for participation as information becomes available. We know from scripture that God's desire is for community in which all can flourish. Trusting in God's calling and promises, we press forward with efforts to live out those promises in this city where we live.

*The next meeting of the Core Team will be Thursday, February 25<sup>th</sup> at 7:00pm. You are always welcome to join us!*

### THANK YOU FROM BENJAMIN E. MAYS

Thank you very much for your generous contribution of hats, gloves, mittens and uniforms. Your donation will be used to advance the educational program for students in Saint Paul Public Schools. The School Board and the administration extend our gratitude for your interest in supporting the work of Benjamin E. Mays IB World School and Saint Paul Public Schools.

Sincerely,  
Kirk Morris, Principal



**Embracing diversity:** Multicultural congregations share their successes, struggles

By Karris Golden

February 2016 "The Lutheran Magazine" (Excerpt)

### **"Rooted in outreach**

The same is true of Lutheran Church of the Redeemer in St. Paul, Minn. Prior to the late 1940s, it was a white congregation nestled in the city's African-American business district. The area, the "Rondo Community," was racially mixed from the beginning, said James Erlandson, Redeemer's pastor. But the congregation didn't reflect this diversity in its earlier years.

After World War II, more African-Americans migrated to the Twin Cities, many settling in the Rondo Community. Some joined Redeemer, and by the late 1950s, 25 percent of its members were African-American.

"There are several generations that have been here because of relationships, children growing up together here, being confirmed, being in the youth group," said Erlandson, who is of European descent.

Today the congregation and neighborhood remain multicultural. While Erlandson said Redeemer doesn't have a multicultural strategy, he believes members consciously embrace diversity and support an authentic, inclusive worship experience. The congregation uses traditional liturgy and, like Hope, worships with music from a variety of cultures.

Redeemer emphasizes community outreach and offers space and programming for neighborhood residents, including young people from Hmong, African-American, Somali and other groups. Erlandson said their hope is that when people attend group meetings or a youth program at Redeemer, they are more likely to return for worship.

That's what brought Raymond Hayes to Redeemer in the 1950s.

Then 5 years old, Hayes' interest was sparked by a sign advertising Redeemer's vacation Bible school. Although his family belonged to a nearby African-American congregation, his parents allowed him to try Redeemer's program.

"I went there and liked it. I liked the kids," he recalled.

While he appreciated his original congregation, Hayes said he felt drawn to the friends he made at Redeemer. His parents let him go there for worship services and then join its youth choir. Eventually his parents followed him to Redeemer, where they quickly became respected members.

Almost 60 years later, Hayes is president of the council."

To read the full article, visit: <http://goo.gl/37DTpK>

Photographer: Stephen Geffre  
Marie Failing (left), Kim Tann and Lisa Erlandson share a laugh during the sharing of the peace at Lutheran Church of the Redeemer in St. Paul.





## Second Sunday Concert & Celebration of Lyngblomsten's 110th Anniversary

Feb 14th - 2:00 to 3:30 pm  
Newman-Benson Chapel at Lyngblomsten  
(1415 Almond Avenue, St. Paul 55108)

Enjoy a performance of Scandinavian music and history; stay for cake to celebrate the 110th anniversary of Lyngblomsten's incorporation. **Performer Cheryl Henningsgaard**—a music teacher and music therapist from MacPhail Center for Music—will sing, play guitar, and lead a sing-along. Additionally, she'll play a 1908 harp guitar that belonged to her great grandmother. **FREE!** Open to the community.

---

### MUSIC NOTES

Exciting things are happening at Redeemer this spring in the area of music. We are preparing a major choral/orchestral work for Good Friday: a setting of the Stabat Mater by Baroque composer Antonio Caldara. I am also organizing the hand bell choir to play this spring. The choir continues to work very hard and lead worship in an exemplary and professional manner. I am grateful for this time we have together.

Jon SC

---

### ANNUAL MEETING UPDATE

The congregation held its annual meeting on Sunday, January 31, at 11:30 am. The proposed budget for 2016 was approved. The staff and our many leaders were thanked for all the work of ministry that has been done this year. David Tannen and Carla Johnson were appointed as lay voting members to the Saint Paul Area Synod Assembly on May 20-21, 2016.

Mary Lou Knipe and Marie Failing were affirmed as our congregational delegates to Lyngblomsten Care Center.

Jon Olson was affirmed as our representative to Gustavus Adolphus College. The terms for our President (Ray Hayes) and Treasurer (Bonnie Hughes) expire this year, so the congregation discussed the possibility of amending the by-laws or electing new officers. Ray and Bonnie have both offered to continue in their offices for 2016, which will require a special congregational meeting, if we choose to amend the by-laws.

**We express our thanks** to all the leaders on our Vestry who have faithfully served this past year – and some who have served for multiple years. We particularly thank Ray Hayes (President) and Bonnie Hughes (Treasurer) who have both served two 3-year terms. Thank you also to: Bob Paddock (Vice-President), Ruth Belmonte (Secretary), Joel Michael and Tammy Cownie (Elders), and our three at-large representatives: Carla Johnson, Reva Rasmussen, Eric Chinquist.

## Project Home

Tues., March 1 – Fri., April 1, 2015.



Once again, Lutheran Church of the Redeemer will be hosting guests from *Project Home* during the season of Lent. *Project Home* is a ministry of hospitality, providing a safe, clean, and comfortable place for families to spend the night when the Ramsey County Family Service Center is full. *Project Home* partners with *The Family Place* in St. Paul, which provides meals, showers, and laundry facilities, and helps families access social services and locate housing.

Even as the economy improves, many Minnesotans have been left behind. Most of the families we host have one or more parents working, but low wages and high rents keep stable housing just out of reach for too many people. *Project Home* lends a helping hand as these families work toward a better life and you can help.

This is truly a community effort for Lutheran Church of the Redeemer and there are plenty of volunteer opportunities available to fit everyone's time and talents, including:

- **Evening hosts (2 adults minimum) – 5:30 p.m. – 8:30 p.m.** Spend 3 hours in the evening hosting our guests – setting out snacks, playing with the kids, and visiting with the parents.
- **Overnight hosts (2 adults minimum) – 8:00 p.m. – 7 a.m. Sun. – Thurs. and 8 p.m. – 9 a.m. Friday and Saturday.** Stay overnight in one of the host sleeping rooms, set out a light breakfast, and do a quick cleanup in the morning.
- **Weekend breakfast** – bring in the fixings and make a hot breakfast for our guests to share on Saturday or Sunday morning. (You can sign-up online or at the Project Home volunteer table; for more information, contact Ruth Belmonte, 651-647-1804 or [rbelmonte@q.com](mailto:rbelmonte@q.com))
- **Donate a snack** – prepare a healthy snack or special treat to share with our guests which can be dropped off at the church anytime.

You can learn more about Project Home from the Project Home team – Ray Hayes, Ruth Belmonte, Jon Vaughan-Fier, Gretchen Vanderlinden-Wang, and Ginny Yingling. You can also check out the Project Home website at **[www.spacc.org/projecthome](http://www.spacc.org/projecthome)**, including a host training video (select “Volunteer Training” in the right-hand column).

There are several ways to sign-up as a Project Home volunteer:

1. Sign up on the calendar at the Project Home volunteer table in the Undercroft.
2. Online at Sign-Up Genius using this shortened web address:  
**<http://bit.ly/1ZAoPyq>**
3. Contact Ginny Yingling (**651-731-4420; [ginny.yingling@gmail.com](mailto:ginny.yingling@gmail.com)**).

Thank you very, very much!!!

Ginny

Coordinator, Project Home at Lutheran Church of the Redeemer



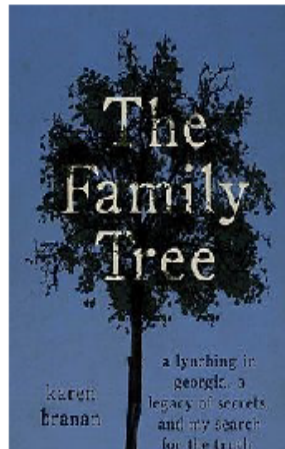
**Photos of Project Home at Redeemer over the years . . .**



Lutheran Church of the Redeemer Presents

## **The Family Tree:**

*A Lynching in Georgia, a Legacy of Secrets,  
and My Search for the Truth*  
by Karen Branan



Book Reading and Discussion

**Monday, February 15th, 2016 at 7:00 p.m.**

Harris County, Georgia, 1912. A white man, the beloved nephew of the county sheriff, is shot dead on the porch of a black woman. Days later, the sheriff sanctions the lynching of a woman and three men, all African American and all of them innocent. In *The Family Tree*, Karen Branan, the great-granddaughter of the sheriff, digs deep into the past to deliver a shattering historical memoir a century after that horrific day.

Karen Branan spent nearly twenty years combing through diaries and letters, hunting for clues in libraries and archives throughout the country and interviewing community elders to piece together the events and motives that led a group of people to murder four of their fellow citizens in such a brutal public display. In doing so, she unearths long-hidden aspects of the South's racial history, but what she ultimately discovers is far more personal. As she unravels this painful story, Branan is also forced to confront her own deep-rooted beliefs surrounding race and family, ultimately challenging her own self-image as an educated, modern woman who had risen above the racism of her upbringing, a transformative process which comes to a head when Branan uncovers a startling truth: She is not only related to the sheriff, but also to one of the four murdered African Americans. Both identities – culprit and victim – are her inheritance to bear.

**Books will be available for purchase during the event for \$26 each**

Lutheran Church of the Redeemer  
285 N Dale St. Saint Paul, MN 55103  
(651) 227-8295 [redemer@redeemerstpaul.org](mailto:redemer@redeemerstpaul.org)

THE NATIONAL  
LUTHERAN CHOIR

CELEBRATING 30 YEARS | 1986 – 2016

WINTER CONCERT

*Psalms and Spirituals*

INCLUDING LEONARD BERNSTEIN'S  
*Chichester Psalms*

FEATURING ORGANIST Aaron David Miller  
HARPIST Rachel Brandwein  
PERCUSSIONIST Will Kemperman  
COUNTERTENOR Ryland Angel

David Cherwien, Artistic Director

Saturday, February 27, 7:30pm

SHEPHERD OF THE VALLEY  
LUTHERAN CHURCH, APPLE VALLEY

Sunday, February 28, 4pm

ST. PHILIP THE DEACON  
LUTHERAN CHURCH, PLYMOUTH

Order tickets at  
[www.NLCA.com](http://www.NLCA.com) or  
call Brown Paper Tickets at  
1-800-838-3006



## **Redeemer's Organs, Past and Present, by Diana Rankin**

Transfiguration Sunday 2016 marks the 25<sup>th</sup> anniversary for the dedication of Redeemer's pipe organ. It was an auspicious event for many of us. Not only was its dedication the culmination of our 100<sup>th</sup> anniversary as a congregation, but we had worked hard to raise the necessary funds to purchase an organ designed for Redeemer that would last at least another 100 years.

The organ was built by the Martin Ott Pipe Organ Company of St. Louis, MO. It is a mechanical or tracker action instrument. The connection between the keys and pedals and the valves that allow air to flow into the pipes, thus making sound, is mechanical rather than "direct electric" or "electro-pneumatic." Tracker action has been the tradition in organ building for centuries and is known for its stability and sensitivity to the organist's touch.

We really don't know very much about Redeemer's earlier organs and there are few clues in *The Record*.

- The organ used in the first church building at Lafayette & Woodward appears to have been a small pipe organ. A photograph of the interior published in the 25<sup>th</sup> anniversary booklet shows a pipe organ placed against the wall behind the altar. The pipes are exposed and, as was customary at the time, have an elaborate painted decoration.
- *The Record* does not tell us anything specific about the organ installed in the new church building at Dale and Carroll in 1911. A photograph of the church interior in the 50<sup>th</sup> anniversary booklet shows that it was a pipe organ and was located on the south wall to the east of the altar. In January 1914, at the request of the Music Committee, it was resolved to purchase a new organ "that will be adequate to our present needs." It is unclear whether or not this organ was ever purchased.
- When the church was enlarged in 1922, plans included a new organ. The February 1922 issue of *The Record* noted "What a relief it will be when our present organ will be permitted to issue its last expiring groan!" The Wangerin-Weickhardt Company, Milwaukee, was selected as the builder. The organ was dedicated on December 14, 1922 with a concert given by Professor Carl Rupprecht, a well-known organist in Missouri Synod Lutheran circles. It was probably much larger than the 1911 organ since there was now more space. The console and choir were located where the lectern and the steps leading down from it now stand. The pipes were placed in a chamber behind the reredos (the ornamental screen behind the altar). The Ladies Aid Society raised \$15,000 to pay for the new organ and carpets for the rebuilt sanctuary.
- By 1957 this organ needed major repairs and in March it was resolved to purchase a new organ console and relay system for \$5,000.



- On October 13, 1968, the congregation approved a building program which would rehabilitate the basement (Undercroft), rebuild the altar area, and complete the Altar Guild room. The new chancel area (as it looks today) was dedicated on March 16, 1969. The organ console and the choir were moved from the front of the church to the east transept, while the organ pipes remained behind the reredos.

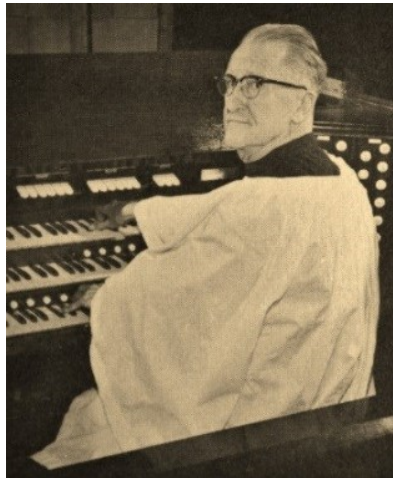
In the 1970s it became apparent that Redeemer's organ had to be replaced. Its electro-pneumatic action continually failed and the organist never knew what would go wrong on Sunday morning. In August 1984 the Vestry approved formation of an organ committee. Members of the committee were Peggy Addicks, Pastor Dann Chapman, Colleen Danner, John Davis (Chair), Meg Davis, Glenn Geffert, Pastor Arnold Heumann, Gerhardt Kroening, Paul Jacobson, Joel Michael, Diana Rankin, and Raymond (Bud) Steglich.

This dedicated group spent 6 years learning about organs, visiting churches to hear organs whose builders were under consideration, and deciding what we wanted in an organ. We also spent hundreds of hours raising money with congregational dinners, working concessions at the Metrodome, and securing pledges. Support was phenomenal and, by July 31, 1988, the Vestry approved a contract with Martin Ott. By 1990, we had raised enough -- \$139,000-- to pay for the organ and needed structural work in full without incurring any debt. (During this time another committee raised the funds for the elevator!) Glenn Geffert, Director of Christian Education and Music, led this effort.

The partially completed organ was first heard in worship on Christmas Eve, 1990. The dedication took place at worship on Transfiguration Sunday, February 10, 1991 and the afternoon dedicatory recital was played by Dr. Kim Kasling, Professor of Music, St. John's University, Collegeville, MN, and consultant on the project. On Ascension Sunday, Dr. Paul Manz led a dedication hymn festival.

This organ serves us well in leading the liturgy and hymn singing. It is very adaptable to organ literature from the early Baroque through today and several organ recitals have been played on it. In order to continue serving us well tomorrow and for another 75 years, it needs regular maintenance (which it receives) and -- above all -- to be played!

Let its flute, diapason, string, and reed pipes -- and the hands that play the keys that open the valves and make them sound -- make a joyful noise to the Lord!



Fred C. Diesing, Director of  
Christian Education & Music,  
1942-1967



Does anyone know the story of the reed  
organ in the Undercroft?



Members of the Organ Committee playing the old pipes



Building the framework for the organ pipes.



With the pipes installed it was time to "voice" them.



The finished product!



Members of the Organ Committee supervising.



Pipes laid out on a table before installing.



Glenn Geffert consulting with the builder

Lutheran Church of the Redeemer  
285 N. Dale St.  
St. Paul, MN 55103-2486

